

AUTOMATIC WEB PAGE BUILDER

Mrs. Mary Anitha T

Associate Professor
Department of Mater of
Computer Applications
The Oxford College of
Engineering
mary.anitha.charlton@gmail.com

Sourabh Karale

PG Student
Department of Mater of
Computer Applications
The Oxford College of
Engineering
sourabhmca2024@gmail.com

Abstract— In today's display day world the require for a website has finished up an basic parcel of any exchange. If a business has it's have location or a webpage it can be benefitted at a good rate. Our subject is related to such kind of prerequisite. The website building work itself is a repetitive one, but which can be simplified by outsourcing the work to a company which would make it easier, but additionally costs a incredible entirety of cash. The website building require the data of programming language which each may not be careful of. In our topics we are covering these inconveniences and giving a peculiarity to the small scale commerce to have their have location in obliged efforts. Our organizations allow with inert and enthusiastic pages. Dynamic Pages have their set of focuses of intrigued. Enthusiastic pages gives an opportunity for client to finished up independent in their creation of these websites, which has a put to their trade.

Keywords—*Easy website creation, drag-and-drop, no coding, beginner-friendly, Build website yourself, Website templates*

1. INTRODUCTION

Little and medium measured endeavors in India include their big quantity and quick creating speed. It's a gigantic requirement for them to build up e-commerce trade through their website entrances. Their paper proposes a Template-based Ecommerce Webpage Builder for them, which is simple to use and adaptable to amplify. Each format in web page builder is composed of numerous layout pages with labels. Template engine can parse the pages and labels and develop template websites in an cleverly way. The appearance plan of a template is isolated from the information tag advancement. These tasks are conveyed to distinctive performing artists to perform in a

simultaneous way. A case think about appears the proficiency of website building and format

advancement with built-in tools. Having a site gotten to be basic for all estimate of businesses to do their trade in their competitive showcase. Companies are making a site for different reasons. A site allows the trade organization to advance, promote and market their commerce all over the world in a cost-efficient and speedy way. A site gets to be the most straightforward way for any businesses to publicize their item and increment the product perceivability to potential customers.

1.1 RELEVANCE

E-commerce are the center of financial globalization and global competition in the 21st century. More and more enterprises are realizing the significance of network marketing for the improvement of their commerce. They establish web entries to present themselves and promote their items and administrations through Web. Their websites make online exchange and client criticism conceivable to realize as well. But a full worked endeavor site solution usually costs so much cash that the little and medium sized ventures (SMEs) cannot manage. They too need of IT technicians for site building and upkeep. In order to cut down the taken a toll, a few SEMs select to outsource the websites improvement to proficient IT companies or use website builders from (Web Benefit Supplier) ISPsto establish their websites in a semi-auto way.

2. LITERATURE SURVEY

2.1 Existing system

Ordinarily Websites contains WebPages which are making by using a few programming dialect. As we all know internet is speediest medium to develop any commerce and there are many e-

commerce websites of those individuals who have their business progressing. There are moreover a few individuals need to propose their commerce on web; for those individuals it is difficult to make time to get information almost programming skill. It will be exceptionally time-consuming handle. So, in their case web page builder will decrease their workload by providing readymade web page layout, to make their possess web location.

E-commerce are the center of financial globalization and global competition in the 21st century. More and more enterprises are realizing the significance of network marketing for the improvement of their commerce. They establish web entries to present themselves and promote their items and administrations through Web. Their websites make online exchange and client criticism conceivable to realize as well. But a full worked endeavor site solution usually costs so much cash that the little and medium sized ventures (SMEs) cannot manage. They too need of IT technicians for site building and upkeep. In order to cut down the taken a toll, a few SEMs select to outsource the websites improvement to proficient IT companies or use website builders from (Web Benefit Supplier) ISPsto establish their websites in a semi-auto way.

There paper depicts a Java instrument, called Visual Van Gogh, for generating client interfacing and web pages. Or maybe than coding an application client interface by hand, Visual Van Gogh gives a graphical editor, that permits the client to visually develop graphical user-interfaces, and assemble Java applets or Java applications from preselected GUI components on the tool-box. The client can drag Java Abstract Windowing Toolkit (AWT) components from the tool-box and drop them on the canvas. Upon the completion of a desired user-interface development, the client can invoke Visual Van Gogh to consequently produce the Java source code. Visual Van Gogh at that point compiles the Java source code to generate a working user-interface precisely the same, in both feel and see, as what the client has outwardly indicated on the canvas. Web locales are ordinarily spoken to utilizing html. Subsequently, our aim is to produce web locales represented in HTML. In arrange to do so, one needs to produce user friendly computer screens on the web which individuals can easily utilize to input web location information from a

standard web browser. At their time, the framework has the capacity to prepare fundamental web destinations designs such as on page, a journal, a profile, an collection and a favorite, etc. which are conventionally utilized on most web destinations. When web location data corresponding to these designs are input by individuals to make a web location, the framework produces the XML documents corresponding to the designs for their web destinations. In turn using the XML record, it is conceivable to relegate an XSLT(extensible Stylesheet Language Transformations). When we utilize XSLT, it is conceivable to create an HTML document comparing to the web location extracting appropriate information from inside an XML document. In addition, using an XSLT it is conceivable to speak to web location data corresponding to each diverse web site.

2.2 Proposed System

The fundamental objective of our wander is making a new dynamic location to increase the thing perceivability to the potential client. In addition, another objective of their project is to make the location by utilizing an online website builder which can be redesignd routinely by agents which having little or no specialized capacities. The commissioner did not want to present anything on the computer, and he required a drag and dropped secure arrange where laborers can update the location from wherever which leads makers to use an online based location builder.

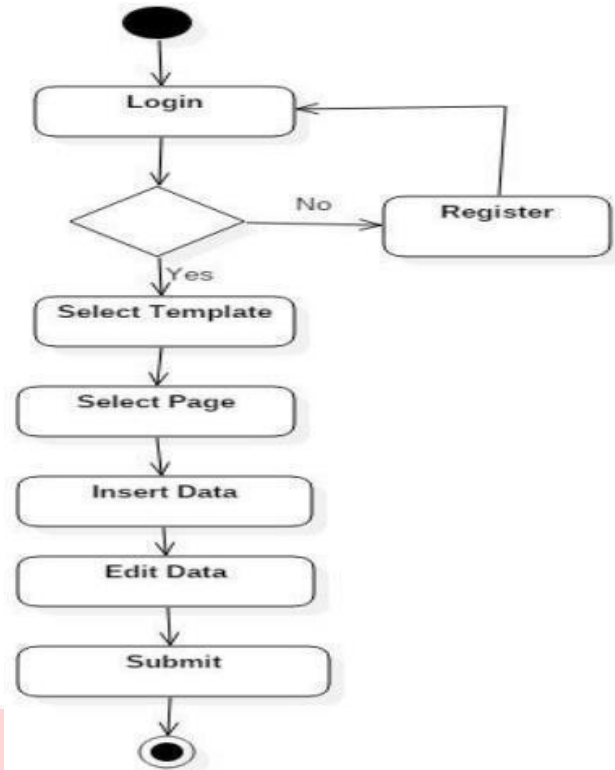
3. SYSTEM ARCHITECTURE

The design of web page builder. The dashed rectangle is the framework border of framework. Exterior framework, there are four performing artists collaboration with framework, indicated by circle icon. What's underneath the flat bar in the center of system shows the workflows of layout creation . The over shows the utilization of the made layouts for SMEs. For format creation handle, layout directors first define format benchmarks for layout motor, such as tag definitions. A tag is really a XML component, whose element name and property meaning ought to be announced in the standards. Format originators are dependable for the framework and the appearance of site layouts.

They can include certain labels to layout pages to indicate function requirement with the offer assistance of layout plan devices. They would not include off-base labels at improper places of template pages, since they get the layout standards from layout directors. The completed crude formats are mainly XHTML web pages with labels, which are at that point put away in the layout store. Format motor can parse the templates from the store and build ASP.Net based template web page for conclusion clients. It can recognize labels in the template pages and know how to bargain with them since it has the layout measures as well.

Template originators are ordinarily craftsmanship plan experts, they can get to work after get the layout benchmarks. Template managers are ordinarily IT software engineers, who are not concerned with the appearance perspective. They can firstly define the interface of labels for layout creators and then make the usage. So format originators and template supervisors can work at the same time. After both of their occupations are done, layout motor can automatically construct and convey layout web pages. In a word, separate of concerns and dispersed employments for targeted professionals that works at the same time ensure the great efficiency of system.

For conclusion clients, they involvement commonplace show of ecommerce websites. Through client entrance, guests can get the information of the venture and make feedbacks. Through administrator entrance, SEMs chairman can upgrade such enterprise data as item and administrations subtle elements, and can associated with clients as well. What's more, SEM's administrators can alter the format if it's required to get difference site appearance and capacities. The enterprise information is all held amid exchanging formats, and it can be connected to modern formats as well. The stream of system given underneath:



4. IMPLEMENTATION

An modified web page builder is a device that improves the creation of websites by computerizing much of the arrange and coding plan. Generally, building a location incorporates composing HTML, CSS, and JavaScript code, which can be time-consuming and requires specialized dominance. An modified web page builder, in any case, licenses clients to make websites without requiring to compose any code. It routinely gives a user-friendly interface with drag-and-drop highlights, pre-designed formats, and customizable components. Clients can select components like substance boxes, pictures, and buttons, and put them on the web page arrange as they pine for. The gadget at that point makes the imperative code in the establishment, ensuring the location is utilitarian and apparently locks in. This approach not as it were speeds up the advancement handle but as well makes web arrange accessible to individuals with little or no coding data. The key benefits of an modified web page builder join ease of utilize, time adequacy, and the capacity to make professional-looking websites with insignificant exertion.

5. CONCLUSION

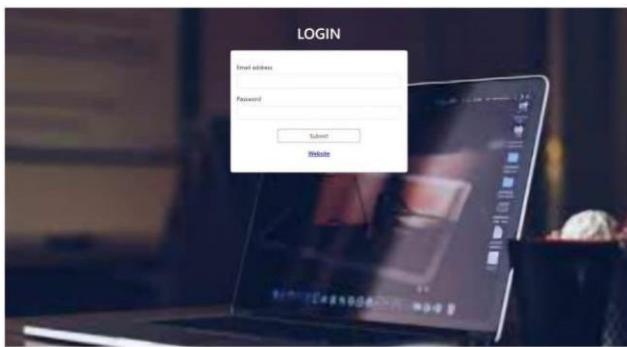
As is depicted over, web page builder is a template-based ecommerce location building course of action for SMEs. Templates can be successfully and quickly built. Advanced exchange function requirements can be met by extending names without rebuilding the format engine. Location building assignments are distributed by TEB to particular performing specialists to perform in a simultaneous way. Along these lines web page builder showed up great efficiency and extraordinary effectiveness in the test case.

REFERENCES

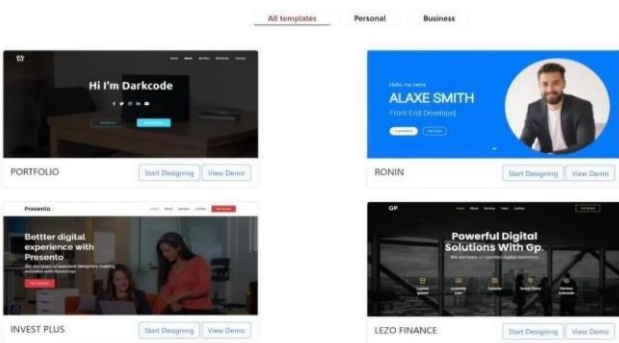
- [1] Susan A. Vowels, “DIY-IT: an empirical study of website development staffing by non-profit organizations”, Proceedings of the 2005 ACM SIGMIS CPR conference on Computer personnel research, ACM, New York, NY, USA, 2005, pp. 59-61.
- [2] “SYSTEM: A Template-based E-Commerce Website Builder for SMEs” using Visual Van Gogh that supports on 2002 by Ying Jiang and Hue Dong.
- [3] <http://webhostinggeeks.com/>. (accessed Jan 8, 2008).
- [4] <http://www.bluevoda.com/>.

SL. No	Test Title	Description	Input Data	Test Case Steps	Expected Result	Actual Result	Status
1	Admin Login	Testing Login Functionality of admin module for successful login	Valid Email and Password	1) Open the website on web browser. 2) Click on Admin Login menu. 3) Type Valid Email and Password 4) Click on Login	Admin Logs on to the respective page i.e. Home Page	Admin Logs on to the respective page i.e. Home Page	Test case Passed
			Invalid Email And Password		Redirect to the same Login page	Shows the error message i.e. invalid Email or password	Test case Passed
			Blank		Not Allowed to submit	Shows the error message i.e. this value is required	Test case Passed

4.1 Screen Shots:



4 Login Page



Templates Page