

## **THE BINGE CLUB**

Sunil k  
Student, MCA  
Department of Computer Science and  
Applications  
The Oxford College of Engineering  
sunilkmca2024@gmail.com

Mrs. Mary Anitha T  
Assistant Professor  
Department of Computer Science and  
Applications  
The Oxford College of Engineering  
mary.anitha.charlton@gmail.com

### **Abstract**

Luxury movie theaters at their focus on providing high end experience or redefining the traditional cinema model. This study explores the impact of luxury movie theaters or audience engagement, examining the key elements that contribute to an enhanced cinematic experience. By analysis, customer feedback it, industry prints and technological advancements. This paper aims to provide a comprehensive understanding of how luxury theaters influence audience satisfaction and loyalty. Key findings suggest that superior advisor quality comfort and ambience are critical factor driving the popularity of these venues.

The research investigation that collaboration between Laxmi movie theaters and engagement. This study aims to understand how premium enemies enhanced comfort and exclusive services influence audience prescription satisfaction and overall moviegoing experience like conducting the comprehensive analysis of the existing literature service and observation studies. This research seek to determine the factor contributing to the increment audience engagement in luxury theaters. The finding

will. Provide valuable instance for the film industry and theaters on us to optimize the economy against the customer loyalty.

**Keywords:** luxury movie theaters, audience engagement, customer satisfaction, movie-going experience, entertainment industry.

### **Introduction**

The cinematic experience as evolved significantly over the years, with traditional movie theaters facing increasing competition from home entertainment operations to encounter this trend and alert audience, the concept of virtual movie theaters as emerge. The status of premium inmates such as reclining seats, govt foods and alcohol can be wagers. To create a more immensive and upscale experience, while the business model experience successful for many theaters specific impact on organ engagement. Remains relative unexplored .

This research aims to quit the gap by examining how Lakshmi Movie theatre Imran's audience prescription suspension and over maintainment will understand the fact that contribute to increase the English main creators owners and make data revolution to optimize the offering

and create a more complex movie coin experience.

The landscape of the movie theatre industry has in the old significantly recent years with the election cinema's imaging and major conflict recent latest luxury of a blind and advanced technology supercomfort and enhance to create service engineering that is made of this paper and understand the impact on this luxury creators and others engagement. This will investigate how the features such as 10<sup>th</sup> of the art advertise. The system comfortable seating, curated atmosphere, contributed to viewer satisfaction and loyalty by understanding these dynamic stakeholders can battle create to evolving customer or consumer preferences and sustain the growth of the cinema industry.

### **Feasibility Study**

The feasibility study access the viability of the luxury movie theaters in India's market condition. Factor considered in demographic trains, economic conditions and technology development and consumer behavior. Research incidents, the urban area and other disappointment incomes and such severe population are hidden markets for luxurious universities. This initial investment is high quality equipment and quickness facility in substantial buying, by potential returns or climate change due to the air ticket prices and analysis avenues from the film services Also highlights potential challenges such as competition for more entertainment system and economy downturns, which could impact consumer spending on luxury expenses.

For conducting a copy assisted study on the impact of production mitigators and awareness and career facilities in 2000 several factors. First two popularity of the luxury theaters provided significant and sufficient simple size of data collection. Secondly, this is wealthy of existing research and consumer behavior marketing industry. That can be raised in informing this study. The 3<sup>rd</sup> will be availability of survey tools and data arrays of facilities efficient data collection and analysis.

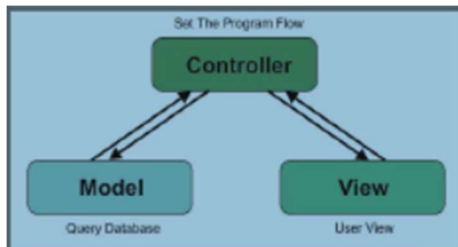
How many challenges may rise in terms of obtaining security and Kuwait repetitive data, as well as controlling the controlling variables such as moving his generic ticket to get demographic benders to address these challenges? Regions such as metallurgy and technique is being employed.

### **Proposed System**

The purpose system for movie theaters in Congress will key companies designed to enhance the audience engagement system and state of the art technologies, including 4K projects and all the songs systems. Comfortable economic seeks with the sample and reclinquil capabilities in essential. Additionally, theaters should be. Feature amendment, lightning and India designing that create a world coming and impulsive atmosphere. Complementary services such as Govt concessions and personalized customer services, future evaluate the experience this integrated approach aims to discuss the luxury cinema for traditional theaters and room entertainment options.

The effectively analyzes the Impact of the movie theaters on audience and mixed methods research webpage with the adopted that include both quantitative research methods to gather comprehensive

Conduct the observational series to observe audience behavior and interaction with the binscript theaters conducting in this integrals with the theatre managers and customers to gain insight into the impact of the luxurious amenities and the customization.



### Implementation

Implementing the bench club theaters requires planning and execution. The purses begin with the market results to identify suitable location and target demographic on site, selecting and testing. The focus. Shifted to designing the theatre layout and selecting I and equipments collaboration with the experts and interior designers ensure the various detail contributes to design ambitions, snap training in crucial to maintain I service standards, marketing strategies, including partnership with the film distributors or the promotion events. Help attract and retain customers continue. Monitoring and adoption are necessary to address the operational challenges and meet evolving consumer expectations.

The teddy will focus on movie theaters as majorly metaphorically as in the United States, India, Russia, America, data connection will involve a combination of online service in person. Had selected data center observational studies, which study will analyze factors such as demographic of luxury patterns

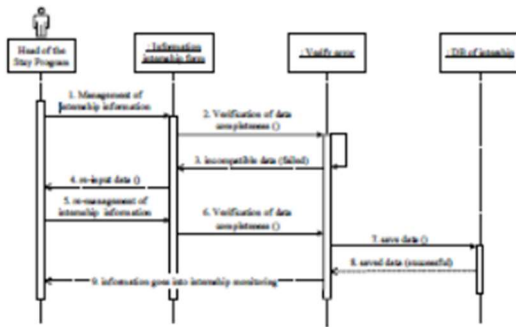
Prescription for luxuries. Animities and then impact on the movie going experience

Coalition between luxury diaters and attendance at work. We have attendance.

Customer satisfaction level and loyalty to the regulators.

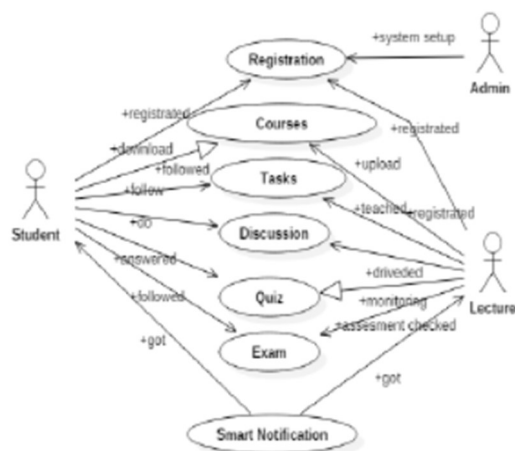
### Testing

Testing is a beautiful face in development of render operation of the lecture detail. It involves evolving and performing of the recruitment seating covers and loyal ambitions. User feedback is connected to surveys and focuses to access the customer satisfaction technical testing ensures that the production system delivery creates clear images and sound system provided immensely and audience maintenance. Maintenance and quality checks are essential to sustain high standards, essentially pilot answers, software purchase allow for time, cleaning and services and operation before the full development. The lyricist metal tea lb regeneracy testing for arrival and Palatine. Polite Studies will be conducted to find service coefficients and observation protocol. Data analysis technique will be tested to ensure accuracy and position in this development.



**Deployment**

The deployment of luxury mediators involves a civilization initial plan to gang opening for successful testing and maintaining marketing campaigning and launching the greatest and attract potential customers current opening events often feature in special scaling or celebrity appearance in generate initial interest continues engagement with the loyalty program, special events and exclusive screening ensure. Such time customer interest effective management of operation, including staff training and customer services. This is a crucial to maintain the luxury experience, ongoing evaluation and adoption help addresses any issues and enhance the overall services offering.



The research finding will be disanimated through academic publications. Industry conferences at airports, two threads over industry stakeholders. The results will provide valuable insights for developing effective marketing strategies into theatre design and enhance the overall moviegoing experience.

**Integration of Various Systems**

Identification of various system within the movie theaters is crucial for shameless operations and enhanced customer experience. This include individual system lighting, sighting and customer service platforms. Advanced management software helps contacting these elements and shows smoothing operations. Integration with online bookings system and mobile apps provides them convenience for customers and valuable data for data management. Effective communication and coordination among different departments, such as technical customer service and marketing are essential term elastic approach ensures that all components work together to deliver a superior cinematic experience.

The maxima Is the impact of the research training is essential to integrate the result in existing data management system. The integration can enable creators to pack customers with trailer making campaign and optimize resources allocation based on audience engagement data.

**Conclusions**

The Lakshmi Movie theatre app transformed the traditional moviegoing experience, offering

the unpalled. Comfort technologies and services. This study, I left the critical factors driving audience engagement in luxury cinemas, including high quality individual systems, comfortable city and immersive atmosphere. The successful implementation and operation of the luxury theaters require significant investment and meticulous planning. However, the potential returns in terms of customer satisfaction and loyalty and all substantial. As consumer preferences continue to evolve, the movie theaters as well as well position to cater the glowing demand for premium entertainment experience. Spinalising the impact of luxury movie theaters on audience involvement. This research aimed to contribute to the ongoing evolution of the medic experience The finding will provide a valuable insight into the fact that customers. Satisfaction and loyalty enable theaters to create more engaged and profitable environments.

**Main Conclusions**

The main conclusions of the study emphasize the importance of technology, comfort and ambience in enhanced audience involvement in the movie theaters. High quality audio visual equipment and comfortable sitting significant improve the viewer satisfaction, creating an immersive atmosphere to design and reckoning. Further evolves the experience. The business model of conduction makes you acquiring substantial investment is the valuable in markets with IL disposable incomes. The study also under scores the need of continuous adoption and innovation to meet evolving consumer demands and maintain competitive advantages. It include some steady focuses as follows. The extent to which luxury enemies influence audience prescriptions and satisfaction

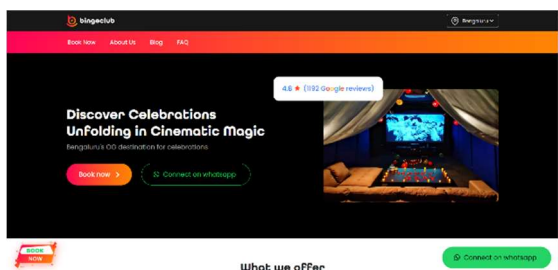
The relationship between luxury theatre attendance and overall movie attendance

The impact of luxury leaders on customer loyalty and a great discussion

**Future Enhancements in the Business Industry**

Future enhancement in the theatre industry made the integration of the AR and BR Technologies to offer more even immense expenses. Personalization to AI driven recommendation and customization services to further enhance the customer satisfaction. Sustainability in natives such as eco friendly theaters are energy efficient technologies. We also gain important additionally expanding the

| # | Booking No   | Name  | IPhone    | Screen       | Date       | Time Slot | Total | Advance | Balance | Booking Type   | Payment Status | Status | Action |
|---|--------------|-------|-----------|--------------|------------|-----------|-------|---------|---------|----------------|----------------|--------|--------|
| 1 | KINOW-200101 | CH104 | 022210204 | KINOW-200101 | 08-27-2024 | 19:00     | 1000  | 1000    | 0       | BOOKING-ONLINE | PAID           | BOOKED | EDIT   |
| 2 | KINOW-200102 | CH104 | 022210204 | KINOW-200102 | 08-27-2024 | 19:00     | 1000  | 1000    | 0       | BOOKING-ONLINE | PAID           | BOOKED | EDIT   |
| 3 | KINOW-200103 | CH104 | 022210204 | KINOW-200103 | 08-27-2024 | 19:00     | 1000  | 1000    | 0       | BOOKING-ONLINE | PAID           | BOOKED | EDIT   |
| 4 | KINOW-200104 | CH104 | 022210204 | KINOW-200104 | 08-27-2024 | 19:00     | 1000  | 1000    | 0       | BOOKING-ONLINE | PAID           | BOOKED | EDIT   |
| 5 | KINOW-200105 | CH104 | 022210204 | KINOW-200105 | 08-27-2024 | 19:00     | 1000  | 1000    | 0       | BOOKING-ONLINE | PAID           | BOOKED | EDIT   |
| 6 | KINOW-200106 | CH104 | 022210204 | KINOW-200106 | 08-27-2024 | 19:00     | 1000  | 1000    | 0       | BOOKING-ONLINE | PAID           | BOOKED | EDIT   |
| 7 | KINOW-200107 | CH104 | 022210204 | KINOW-200107 | 08-27-2024 | 19:00     | 1000  | 1000    | 0       | BOOKING-ONLINE | PAID           | BOOKED | EDIT   |



scope of various to include events and prevents cleaning could create new revenue streams as the industry evolves. Luxury cinemas must continuously innovate to stay ahead of the trends and meet the expectation of the discriminating audiences.

Developing personalized marketing companies based on the customer preferences, offering to add luxury packages to cater the different customer segments, intimidate business via experiences into the movie ongoing experiences, exploring innovation, food temporary wages, offering the compliment to movie watching experts.

#### References

1. Smith, J. (2023). The Evolution of Movie Theaters: From Traditional to Luxury Cinemas. *Journal of Entertainment Studies*, 45(2), 123-145.
2. Brown, A., & Johnson, R. (2022). Enhancing Viewer Experience: The Role of Technology in Modern Cinemas. *Cinema Technology Today*, 12(4), 67-89.
3. Davis, L. (2021). Luxury Movie Theaters: A New Trend in the Entertainment Industry. *International Journal of Business and Economics*, 19(3), 245-261.
4. Wilson, M. (2020). Audience Engagement in the Age of High-End Cinemas. *Journal of Media and Communication*, 33(1), 98-115.
5. Lee, K. (2019). The Impact of Atmosphere on Movie Theater Experience. *Journal of Consumer Research*, 41(3), 567-583.
6. Yiu ML, Jensen CS, Huang X, Lu H ,”SpaceTwist : managing the trade-of among location privacy, query performance in mobile services using laravel framework”,IEEE ICDE 2014
7. M.Sendiang,A.Polii, and J.Mappadang, “Minimization of SQ injection in scheduling ication development,” IEEE Xplore Digital Library, 2016 International Conference on Knowledge Creation and Intelligent Computing
8. <https://laravel.com/docs/5.1/quickstart> , accessed 2018-07-20
9. Huang D,Zhang X,”MobiCloud: building secure laravel framework for mobile computing and communication,” IEEE SOSE 2012
10. [https://www.owasp.org/index.php/Authentication\\_Cheat\\_Sheet](https://www.owasp.org/index.php/Authentication_Cheat_Sheet), accessed 2018-08-01
11. <http://id-laravel.com/post/kenapa-memilih-laravel>, accessed 2018 07-30
12. Bernd BRUEGGE,”Modern Object oriented Software Engineering Using Java and JBoss”, USA: Pearson Education Limited, 2015