

STUDENT STUDY PORTAL

LORRY SRINIVAS

PG Student

Department of Master of Computer Application
The Oxford College of Engineering
sreenivasmca2024@gmail.com

Mr. ASHOK B P

Assistant Professor

Department of Master of Computer Application
The Oxford College of Engineering
ashokbp.mca@gmail.com

ABSTRACT: A Student Study portal is an internet-primarily based platform designed to beautify the educational revel in for college students. Combining key tools inclusive of digital notice-taking, Assignment control, Schedule and integration of external assets such as Google Wikipedia, e-books and YouTube, the platform aims to create a whole and powerful studying environment. In conclusion, the Student Learning Portal represents a kingdom-of- the-art answer that provides college students with the tools they want to reach their educational adventure. By offering a complete and incorporated platform, this initiative goals to redefine the manner students interact in their research, in the end contributing to extra enriching and powerful mastering.

Keywords: ERP, Enterprise Resource making plans, Student Management System, Staff Management, Marks Management, Student Monitoring System, Student Academic Tracking System.

1. INTRODUCTION

Student Study Portal is a visionary initiative that pursuits to convert the world of training with the aid of supplying students with a modern-day on-line platform. This net- based portal acts as a dynamic hub that offers a bunch of progressive capabilities carefully designed to enhance the overall gaining knowledge of revel in. At the coronary heart of the portal is a sophisticated digital Notetaking that permits college students to seamlessly create, arrange and access their Notes. Powerful schedule control equipment makes sure efficient time control, while seamless integration with Wikipedia and Google Books ensures quick get right of entry to a wealth of external facts. The platform in addition allows collaboration with functions including YouTube integration of tutorial films. By simplifying challenge management strategies, the portal permits actual-time verbal exchange among

students and teachers, which promotes transparency and performance. The Student Learning Portal ambitions to be a crucial and invaluable device for students seeking an enriched and customized gaining knowledge of adventure by combining numerous academic resources from e- books to multimedia content material. Focusing on technological advances and person-pleasant layout, this project seeks to redefine the educational experience by using fostering engagement, collaboration and ultimately educational fulfillment. In the modern educational landscape, college students frequently come across demanding situations in coping with and having access to various factors in their academic journey. The absence of a centralized platform ends in fragmented facts, making it difficult for college kids to their music their educational growth, abnormal schedules and have interaction with supplementary resources. The loss of a comprehensive gadget effects in ignored closing dates, disorganized examine routines, and a disconnect among educational content material and progress tracking.

The Student Learning Portal targets to fulfill those demanding situations by imparting a centralized virtual platform that streamlines the studying system and promotes more efficient and attractive instructional surroundings. Increased access to assets, better agency, and personalized getting to know can lead to better grades and better knowledge of course fabric.

The Scope of the Student Study Portal challenge is to create a consumer-pleasant and flexible on-line platform that enhances the academic experience of students The platform does no longer implement advanced plagiarism detection mechanisms for assignments or notes. Integrating numerous systems like E-Books and Wikipedia can be challenging, requiring API help and ability security considerations. Any adjustments or disruptions in these outside services may additionally impact the capability of the portal. The Google Books API does not provide complete-text get entry to books for offline studying. Not all

books to be had on Google Books are available through the API, doubtlessly restricting seek outcomes. The you tube seek python library is based on YouTube's seek API.

2. LITERATURE SURVEY

2.1 EXISTING SYSTEM

Learning Management System (LMS): Learning Management System is a web-based platform designed to facilitate the management, management and shipping of instructional content material and resources. It is a complete device for teachers, college students and directors to prepare, display and improve getting to know in various educational environments, such as faculties, universities and company training programs.

University Information System (UIS): University Information System (UIS) is a complete software platform or database gadget designed to control and prepare diverse factors of a college's administrative, educational and operational sports. UIS acts as a primary hub that connects multiple functions and information sources, imparting a unified and seamless approach to information management inside the college surroundings. Here are key factors of a University Information System: Student Information Management, Academic Management, Faculty and Staff Information.

2.2 PROPOSED SYSTEM

The proposed Student Study Portal targets to create an included digital platform that complements the educational enjoy through using offering a whole lot of capabilities tailor- made to satisfy the several desires of college students. The portal will offer gear for digital be conscious- taking, eBook are searching for, venture management, YouTube integration, time table creation, and Wikipedia search, all designed to improve getting to know efficiency and commercial enterprise corporation. Firstly, the Digital Notetaking characteristic lets in college students to create, prepare, and control their study notes digitally inside a person-high-quality interface. This will permit university students to hold their notes systematically arranged and without problems reachable, improving their have a look at behavior and common educational overall performance. The E- Book Search functionality will connect to Google Books, allowing users to look for and get entry to relevant books brief. By leveraging Google Books are trying to find skills, the portal ensures that scholars have get right of access to a sizeable kind of studying substances at their

fingertips. Secondly, the Assignments characteristic offers a complete list of assignments with precise information which include identify, description, due date, and submission fame. This permits college students keep track of their assignments and submit them earlier than the due date, with a desire to add files straight away through the portal. The integration with YouTube, using Python's YouTube API, offers university students get admission to a considerable range of tutorial content material at the side of tutorials and lectures, improving their learning enjoy. The Schedule characteristic lets in users to create custom designed schedules based totally on their guides, topics, or particular sports, promoting better time control. Additionally, the Wikipedia Search integration gives short get right of access to supplementary statistics and references, helping have a look at.

2.3 FEASIBILITY STUDY

The Student Study Portal is technically feasible given the sturdy and extensively supported era stack, along with Python Django for backend improvement, MySQL for database manipulate, and HTML, CSS, Bootstrap, and JavaScript for the frontend. The portal's integration with out of doors services like Google Books, YouTube, and Wikipedia can be efficiently managed the use of existing APIs, ensuring seamless capability. Additionally, the specified expertise units for this technology are usually available, making the improvement process honest and achievable. Economically, the challenge is possible because of the low preliminary investment, way to the use of open- source technologies, and the feasible ongoing maintenance charges generally related to server web hosting and periodic updates. Revenue technology through top class subscriptions, advertisements, or partnerships with academic establishments offers a promising go lower back on investment. Operationally, the portal addresses essential scholar wishes which consist of be conscious-taking, undertaking control, and get entry to academic resources, making sure excessive customer recognition and pride. With a person- fine interface and scalability options, the portal is poised for easy operation and functionality boom.

2.5 HARDWARE AND SOFTWARE REQUIREMENTS

HARDWARE REQUIREMENTS:

RAM	4GB
HDD	80GB or above
Processor	Dual core Processorintel-i3 or above

SOFTWARE REQUIREMENTS:

Frontend	HTML, CSS, JAVA SCRIPT, BOOTSTRAP
Backend	Python
IDE	Visual studio code
Framework	Django
Database	MySQL

3. SOFTWARE REQUIREMENT SPECIFICATION

3.1 USER

STUDENT USER

The Student Learning Portal is designed to serve a wide range of customers in the educational atmosphere. Students are the primary user group, the use of functions consisting of virtual notice-taking, challenge management, non-public schedules, e-books, YouTube, and direct get entry to Google and Wikipedia for in-intensity instructional research. Through the portal, college students can seamlessly create their take a look at notes, manipulate assignments correctly and customize their examine schedules primarily based on man or woman publications and activities. The eBook repository gives a wealth of instructional assets, while integration with YouTube gives curated academic content material. Access to Google and Wikipedia inside the portal guarantees a short record seek.

TEACHER USER

Teachers additionally use the platform to percentage resources, manage assignments and offer treasured guide to students. The pupil studying portal permits teachers to seamlessly percentage getting to know substances, making sure clean get right of entry to for college students. With the platform, instructors can arrange and tune assignments efficaciously, which promotes a smoother conversation channel

for handling assignments.

3.2 FUNCTIONAL REQUIREMENTS:

Digital Notetaking: This feature allows college students to create and prepare their have a look at notes digitally inside the portal. A user-friendly interface to create notes.

E-Book Search: Users can look for suitable books and the device will connect with Google to find and provide a right away hyperlink to the diagnosed e book. The device seamlessly integrates with Google Books, leveraging it seek abilities to provide customers with short get entry to relevant learning substances.

Assignments: User can get entry to a list of assignments with info along with title, description, due date, and submission status. Submit assignments earlier than the due date, with the choice to add files.

YouTube: Student Study Portal integrates seamlessly with YouTube, leveraging Python's YouTube API to enhance the studying enjoy. This integration lets in users to get entry to quite a number instructional content. Students can watch educational movies, tutorials, and different relevant learning assets

Schedule: This feature lets in customers to create customized schedules based on character publications, subjects, or specific activities, increasing time management flexibility. Users can customize their agenda to meet their person instructional necessities.

Wikipedia Search: The platform integrates with Wikipedia so customers can quickly get admission to additional statistics and references.

3.3 NON-FUNCTIONAL REQUIREMENTS

Portability: Student observe portal internet site can be accessed on any one-of-a-kind machines. Availability: Student examine portal internet site can be to be had 24x7, user can use this internet site any time.

Security: which includes user credentials and facts, need to be encrypted to protect once more stun authorized users.

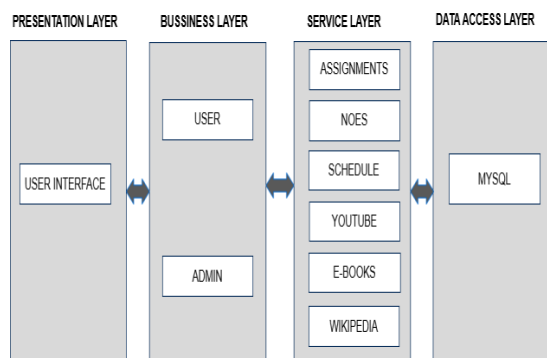
Scalability: The gadget should be able to dealing with many concurrent users without considerable overall performance degradation.

4. SYSTEM DESIGN

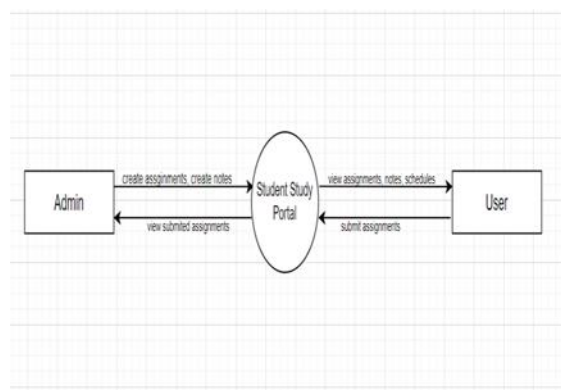
4.1 ARCHITECTURAL DIAGRAM

The structure diagram of the Student Learning Portal provides a nicely-based and interconnected system with a systematic facts glide, emphasizing

therelationships and connections among the gadget admin, database, and customers. This design providesa strong basis for a green, secure end-user-friendly training platform.



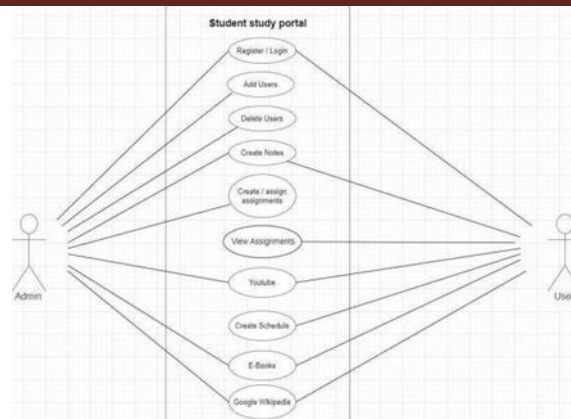
4.2 CONTEXT DIAGRAM



A Context diagram (DFD) illustrates the easy float of information in a system. In this instructional platform, the administrator performs a key function by means of the use of providing instructional assets which include take a look at substances and assignments which can be relevant. Administrators additionally manage user money owed, making sure information protection and consumer authentication. In reception, university students can get admission to the ones substances and interact with the platform by way of submitting assignments and the usage of virtual notice capabilities. Additionally, students can look for e-books, watch educational films, and get admission to supplementary records from included systems like Google Books, YouTube, and Wikipedia, developing a comprehensive learning environment.

5. DETAILED DESIGN

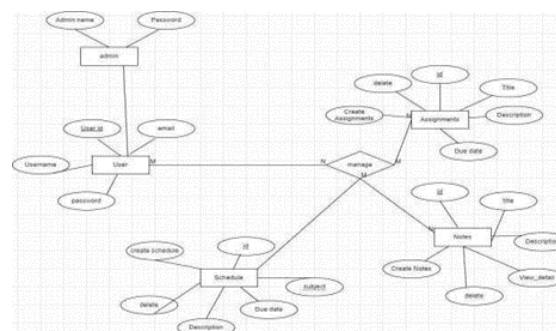
5.1 USE CASE DIAGRAM



In the student portal use case diagram, both college students and admin have interaction with the middle functions. Students can log in, get admission to studying materials, control schedules, submit assignments, offering a holistic view of their work. On the alternative hand, admin have functions like uploading notes, monitoring submissions and dealing with customers. This use case design effectively describes the roles and interactions of each actor within the pupil mastering portal.

5.2 ER DIAGRAM

The Entity-Relationship (ER) diagram for the Student Study Portal outlines the data version with entities like User, Admin, Notes, Schedule and Assignment. Relationships depict how college students have interaction with have a look at substances, post assignments. The diagram illustrates the position of admin in managing academic sources and overseeing student submissions. Attributes within entities seize applicable information, growing a complete visual illustration of the information shape and interactions in the Student Study Portal.



6. SCREENSHOTS:

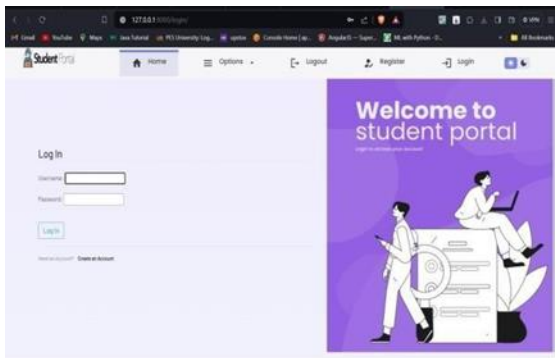


Figure 7.1 above is the Registration page. To access the website, a user must first register in the application with a few details such as username, email and password. After registration, the user will get a username and password, with the help of this credential, the user can access the application

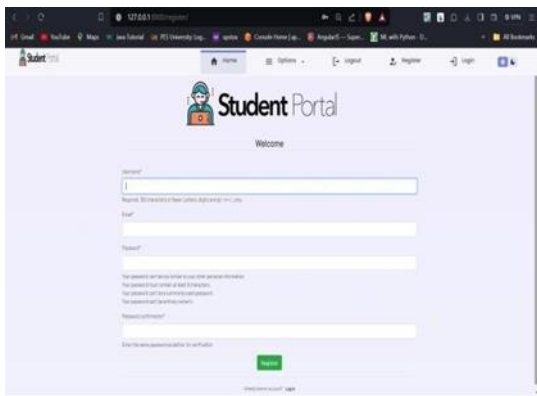


Figure 7.2 above is the Login Page. Once registered, the user will receive a username and password. With the help of the certificate, the user will access the website.

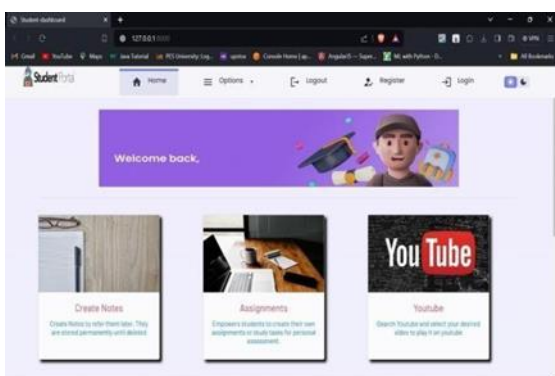


Figure 7.3 Dashboard Page above. Once they have successfully logged in with their username and password, students are directed to the dashboard where they can access resources such as digital

notes, operating systems, program settings, YouTube, Wikipedia, and e-books.

7. TESTCASE

Table 7.1: Below table displays the test cases of create notes functionality

Test case ID	Step Details	Expected Result	Actual Result	Pass/Fail
TC01	Create Notes	New note Should be created, displayed in list, title & content saved correctly.	New note is created, displayed with title & content saved correctly.	Pass
TC02	View Note	note should be displayed with title and description	Each note is displayed with a title and description	Pass
TC03	Delete Notes	Note is deleted and removed from the list.	A note has been deleted and removed.	Pass
TC04	Create Notes With empty title and description	System should not save the note and display an error	Please fill out all fields	Pass

Table 7.2: The following table presents the test cases for the "Assignments" functionality.

Test case ID	Step Details	Expected Result	Actual Result	Pass/Fail
TC05	Assignment list	List of assigned assignments is displayed.	The list of assigned assignments is being displayed.	Pass
TC06	Upload Assignment	The assignment file upload should be successful.	The upload of the assignment file is successful.	Pass

8. CONCLUSION

The Student Study Portal is a entire and bendy platform designed to decorate the academic revel in thru integrating vital sources and functionalities right into a single, cohesive system. It offers a wide variety of features inclusive of examine-taking, venture management, access to YouTube and Wikipedia, e- books, scheduling, and a chatroom, addressing the various desires of college students. By consolidating the ones gear, the portal not nice simplifies educational obligations however additionally encourages inexperienced have a examine conduct and fosters collaboration.

9. FUTURE ENHANCEMENT

For future improvements of the Student Study portal undertaking created the use of Python Django, numerous interesting trends may be pursued to

further decorate the person reveal in and amplify the platform's talents. One key enhancement may be the combination of AI-pushed customized studying suggestions, leveraging device reading algorithms to suggest applicable property, look at substances, and getting to know paths primarily based mostly on character student overall overall performance and options. improvements won't simplest make the student have a have a look at portal greater robust and man or woman- friendly however additionally feature it as a contemporary device in the ever-evolving panorama of digital schooling.

10. REFERENCES

- [1] ISTUDENT PORTAL ONLINE ACADEMIC MANAGEMENT SYSTEM by Prof. Rahul Bhandekar, Mr. Sanket Rathod https://www.irjmets.com/uploadedfiles/paper/issue_1_2_december_2023/47120/final/fin_irjmets1702037696.pdf
- [2] Enhancing Student Learning Through Mobile Learning Groups by Henry C. B. Chan; Tsui Tze Fung <https://ieeexplore.ieee.org/document/9368416>
- [3] Online Student Portal by Y. A. Baheshm, A. O. Aldhaibani, S. A. AL-Shamih https://scholar.google.com/scholar?hl=en&as_sdt=0%2C5&q=Online+Student+Portal&btnG=
- [4] Learning Portal for the Technology of Collaborative Work on Virtual Space by Supaporn Sophonpattanakit <https://ieeexplore.ieee.org/document/472133>