

Central Implicit Concept Storming Tool

Md Arman¹ Prof. Mridula Shukla²

¹ MCA Final Year , ²Asst. Professor

^{1,2} Department of MCA , The Oxford Colleg of Engineering

Bommanhalli , Hosur Road, Bangalore – 560068

ABSTRACT - *The application deals with the thoughts and sorts out the things at one place so that arranging and working turns out to be simple. Oversee greater activities different division and working style must be surrounded so it will be muddled with the utilization provided by the software. Ideas can be effectively delineated and data can be dubbed in any configuration, in addition to application gives a legitimate presentation framework additionally so we can say a wide range of data thoughts, undertakings, arrangements and coordinated effort can be overseen from one interface. Mind mapping is a rational and innovative means of generating ideas which include the note each ideas and each possibilities and while on 1st stage of planning or following the actual plan while implementation. Mind mapping consist a main node which is plotted on center and related ideas of sub-nodes are linked with main node.in Mind mapping lines are used to connect the each node with its superior node in hierarchical manner .color can also be used, usually the color with more intensity .images can also be used to make note, no strict rule is imposed for mind mapping what to be used and what not to be used? Mind mapping help to generate ideas and pen down the ideas to last forever. Use of image, diagram and words make mind mapping very attractive for human's mind.*

Keywords: *brain-friendly concepts, monotonous information, dubbed, note-taking, note-making*

I. INTRODUCTION

Humans mind are capable of generating more ideas rather than remembering those ideas, during planning many ideas comes to our mind but we leave behind those ideas during execution of plan which effect the plan. Mind mapping is a colorful planning tool which helps the user to put the idea in written form so that it can reviewed during different stages of planning. In mind mapping different color can be used so that main idea can indicated by color, and images can also be used in the mind mapping process. Mind map always start with main idea by plotting it on center. Mind mapping consist a main node which is plotted on center and related ideas of sub-nodes are linked with main node. Mind mapping helps humans to generate ideas in organized way so that every aspect of the plan can be viewed properly. A hierarchical structures of nodes are created and the main node or the subject is put on the center

Mind map can be consider as a technique or tool which helps in putting the idea on paper from the mind and the ideas are traced in hierarchical manner. For the following reason the mind mapping is considered as effective tool

●It is a tool which uses picture and words giving a pictorial representation of whole plan is really very attractive

●It is like a flow chart but in mind mapping constraints are not there which makes it easy. While putting ideas into nodal structure many new aspects are rediscovered with more enhancement.

●As in mind mapping only main points or aspects are discovered, so it is very easy to put large amount of data into it is abstract view of plan.

●It is very interesting way to generate any new idea or to provide less complicated scenario in the planning.it adopt the brain behavior technique to collect the idea-bouncing ideas off each other, rather than thinking in one dimensional way.

●You can initiate ideas very rapidly with this approach and are promoted to explore different creative pathways.

One easy way to perceive mind map is by evaluating it to a tree. The centers is the root of the main idea;

Branch are the thoughts in the mind; Branches are the alternative thoughts in the brain.

The bold heading or image can be considered as important idea of the plan or where multiple ideas can be considered.

Final idea or worthy idea presented in mind mapping is the idea generated in our mind after many revision and envisioning. Mind map elaborates the each aspect of the idea which is presented by our own mind. It is graphical presentation of idea where the general aim is to put the dynamic ideas of the mind. Mind map can be used to produce a proper idea in software fields as well to manage the complexity involved in software designing phase which includes the idea. Mind maps can be applied in many place to cut the complexity of the planning in our day to day planning or any project, mind map project the large project into simple one ,it can also applied in personal, educational or any project related planning.

Large project are complex and it need to put in simple format to present the whole plan in one view with dealing information, so mnemonic codes can be used with images,

symbol and words. Mind map can also use various color to present idea in attractive manner

The five fundamental features of Mind Mapping:

- The main aim is put the main idea in the central view so it can be linked with secondary aspects.
- Center view is the root of the idea and secondary are other spread as branches.
- Branches can be short descriptive to know the connection.
- less important or supporting ideas are connected as leaf
- Mind mapping can be represented a tree.

II. Existing and Proposed System

Existing System - The existing system are not capable of doing mind mapping in effective manner. A plan cannot be edited by different user which restrict the sharing of ideas which put limit in planning.

Available Technologies

In available technology the attachment of information to the ideas which is represented as node cannot be achieved which makes the planning less informative. Coloring the nodes make mind mapping are not there in existing system trace .Search cannot be done to find an element on the map. Admin mode is missing which allow admin to add others user to edit one document. The collaborative designing for any type of complicated process designs end implementation of any ideas a very complicated in the existing environment. Existing system can be considered as part of evolution for the mind mapping technique.it has to be enhanced to deal with more complexity to reduce user complexity with mapping. Some of the main concerns what we face in the existing system are

- Lack of live collaborative working
- Lack of multiple concept integration
- Central depict for multiple thoughts with multiple teams is not possible
- Information integration is not possible
- Clubbed resources are not supported
- Concerns in the format of sharing
- Concerns with respect to publishing
- Relationship structuring can't be performed
- Tagging structuring cannot be performed
- Content design is not possible
- Platform with content management is not possible

Proposed System - Our proposed system will provide the design interface along with the content management at the Central collaborate resource based platform. In our

proposed system we tried to reduce user complexity by handling the complexity in application.in proposed system our team tried to put more enhanced version of mind mapping by including several editing option. In proposed system attachment can also be added to nodes as we need information about the functionality of node and attachment of all format is supported. Multiple teams can collaborate and incorporate the ideas. Maps can be navigated easily through out the window with navigation button. Some of the advance mechanism to mention

- Supports incorporated working start
- Contents design can be managed in different formats
- Content organization will be managed
- Multiple custom options are provided
- Relationship management can be managed
- Tag functionalities will work properly
- Use of high-end integration with the resources will be acceptable
- Any format information integration will be supported
- Helps manage structuring of work
- Security concerns will be taken care of
- Advanced sharing in presentation options are integrated

III. Feasibility Study

Our product mind Mapping is a revolutionary product where the markets lacks some kinds of features and the present scenario is that the collaborative designing for any type of complicated process design and implementation of ideas a very complicated in the existing environment some of the main concern what we face are

- Lack of live collaborative working
- Lack of multiple concept integration
- Central depict for multiple thoughts with multiple teams is not possible
- Tagging structuring cannot be performed
- Content design is not possible
- Platform with content management is not possible
- So we tried to improve the idea by implementing the lacking features in our application.so our proposed the system will provide the design interface along with the content management at the Central collaborate resource based platform. Multiple teams can collaborate and incorporate the ideas. Some of the advance mechanism to mention
- Supports incorporated working start
- Contents design can be managed in different formats
- Content organization will be managed
- Multiple custom options are provided

- Relationship management can be managed
- Tag functionalities will work properly
- Use of high-end integration with the resources will be acceptable
- Any format information integration will be supported
- Helps manage structuring of work
- Security concerns will be taken care of
- Advanced sharing in presentation options are integrated.

Features

•Our product mind mapping have some unique features which led to the development of this application are as given below:

- Supports incorporated working start
- Contents design can be managed in different formats
- Content organization will be managed
- Multiple custom options are provided
- Relationship management can be managed
- Tag functionalities will work properly
- Use of high-end integration with the resources will be acceptable
- Any format information integration will be supported
- Helps manage structuring of work
- Security concerns will be taken care of
- Advanced sharing in presentation options are integrated.

Technical Issues

As per the development requirement for mind mapping, Microsoft visual studio is used to handle the complexity of the project and to provide effective environment. The project deals with the creation of mind map online so Asp.net technologies has been used to create the effective application which can do the mind mapping, to access the application user needs a browser installed on their system.to save the mind map MS SQL Server is used.

Economic Benefits

This system has been designed to do mind mapping. Mind mapping can be used in any field for planning and envisioning. Mind mapping application deals with brainstorming where detailed planning can be done by providing attachment of any formats. This application solves the issue of manually doing of mind map which is

time consuming and where editing is not possible.it reduced the paper work and also provide better environment to do mind mapping with effective option.

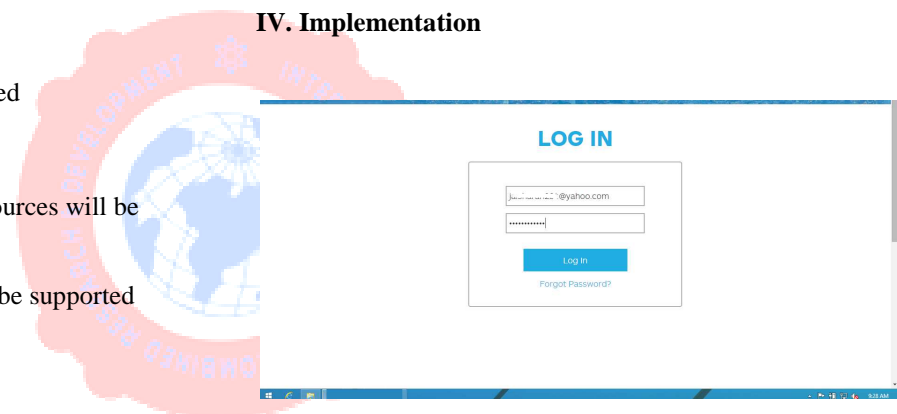
Legal Issues

This system is copyright product of Idego solutions LLP and it does not hold any copyright for any mind mapping template, template has to be used with the authorization of the template designer.

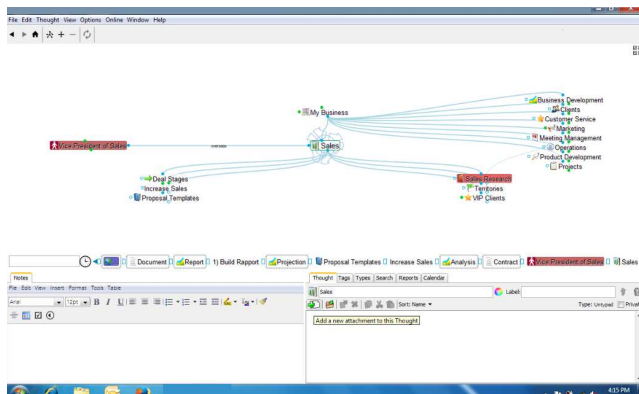
Operational Issues:

Existing Mind mapping application lacks the contents design that can be managed in different formats, so in our application we improved content design to support various format. One more important features are enhanced for advanced sharing in presentation. Our mind mapping can be supported on any platform with help of browser which make our application as platform independent. In this application attractive design technique is used and it is easy to navigate the application.

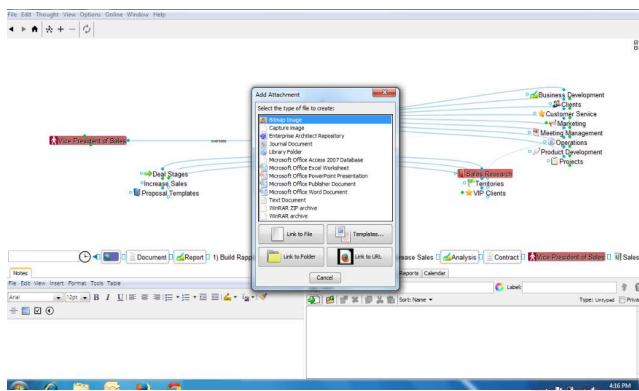
IV. Implementation



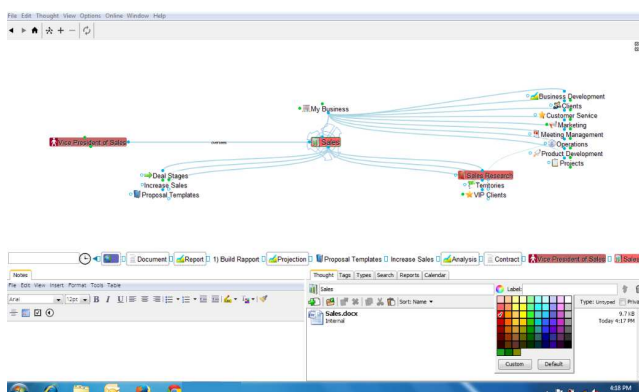
This is the login page where users are provided with the input fields for username and password, if the user enters invalid credentials to those fields then an invalid message is displayed to, if both the fields are correct then the user is logged in to the system. In case when the user forgets the password, he can retrieve the password using the “forgot password page”.



In the map there is need to attach document to make map more informative. Document can be added to the parent node also to the child node. In the below page user can add files by selecting one node. At right bottom of the window details regarding the nodes will be shown. Users can add file by clicking to the given browse button to load the file from the source.

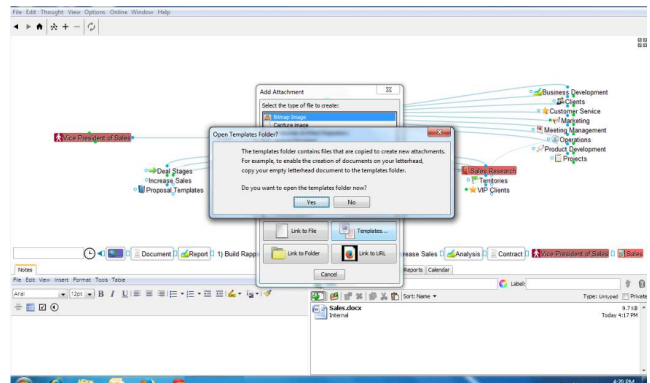


User can attach any type of file from the given pop up window by clicking on given option. Node can have as many as possible document attach to it. User can link the file from any folder or user can also link any URL to node. Templates can also be attach to the nodes.

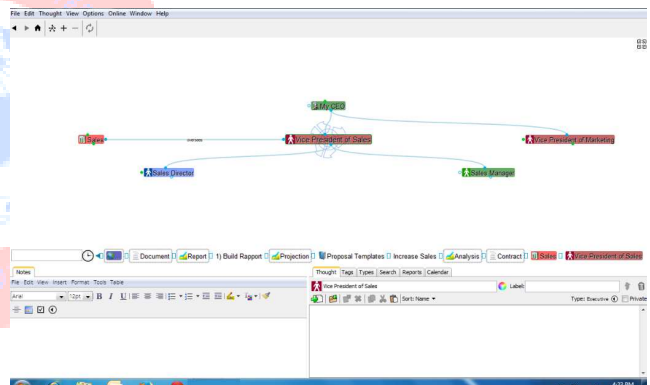


In large map there is need to track and focus on the important nodes, so custom coloring option is given where user can choose a color to represent important nodes.

Below “vice president”, “sales” and “sales research” are inter connected so red color has been used to denote on the screen.



User can also add built-in templates. Built in templates are in “ready to use” attachments which can be imported to the workspace to add information to a particular node. Templates is a folder where use can save files to insert into node as attachments. There are needs arises to add a set of basic file to all nodes in a map.



User can have details regarding any node, here user have to only select a particular node to know the details like “what are the attached files to the nodes. At the right corner of the screen user can have the details regarding the node. While planning user can have many file attach to node, so user can also sort the files by name or by size to get the particular file.

V. Conclusion

The use of mapping is to generate a plan which can be envisioned to put the plan in structure form to reduce the complexity of the planning and hence detailed plan can be generated. This decision making tool can be used where ever planning is required.

Mapping can be applied for educational purpose, business by note making.in mapping complexity is reduced and planning is done in proper format by putting the detailed information in pseudo and mnemonic codes. A proper planning is not possible in traditional system, there are chances of skipping important aspect of the planning.so the mapping can be used to present the idea in single view to plan each perception. In traditional System there is requirement of word and phrases which is difficult compare to using interactive design to put plan in pictorial view using mapping. Mapping is needed specially for planning or to pitch new ideas to transform into successful plan while execution.

Here the idea is represented in attractive way so that it is easy to understand the plan before beginning of execution. Thoughts can be represented in nodes so that any missed section can be easily traced.

Mind mapping can be used where planning is required, to generate new idea or enhancement in new idea can be easily achieved in mind mapping.

VI. References

- [1] - **Kogent Learning Solutions Inc.** “.NET 4.5 Programming 6-in-1”, Black Book, Wiley India, Revised Edition,2013.
- [2] **Brian Knight, Steven Wort, Ross LoForte,** “Professional Microsoft SQL Server 2008 Administration”1st Edition, 2008.
- [3] **Andrew Trolsen** “Pro C# 5.0 and the .NET 4.5 Framework”, Wiley-Appress, 6th Edition, 2012
- [4] **Balram Krishan** "Web Programming Using ASP .NET", Balram Krishan, Dreamtech Press, 1st Edition, 2014.

